

A presentation

# Global Power Logistic Services (Thailand) Co., Ltd

---

## Presentation

Prepared by  
Ms. Ple

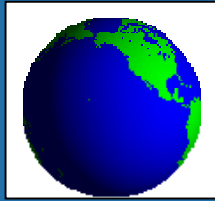
# Content

---

- Company Introducing
- V & M Statement
- Forming Strategic Alliance
- Additional Services
- Security
- Project Cargo

# OUR STORY.



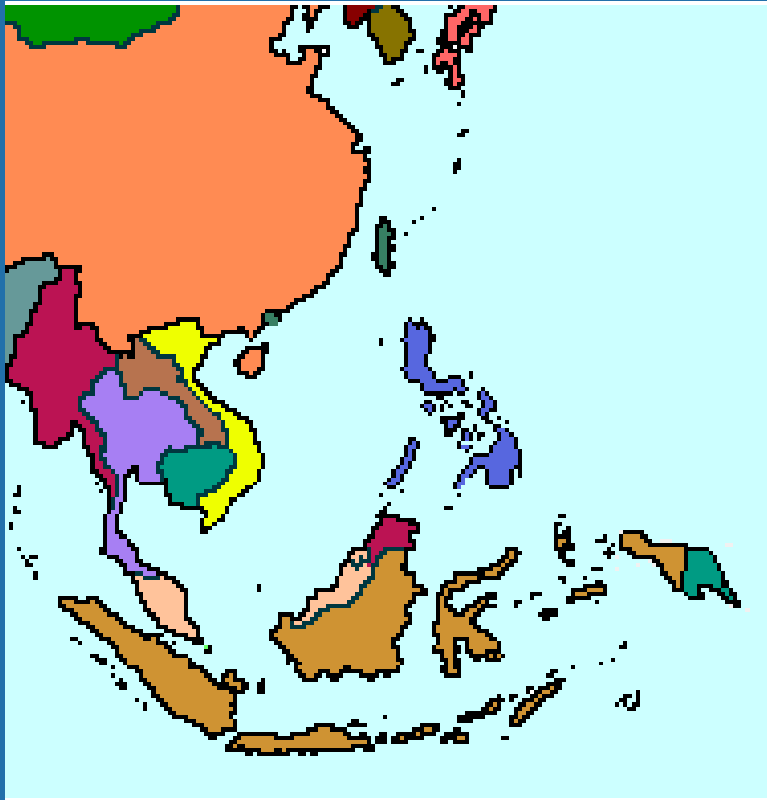


# General Profile

- SIN HQ established since 1970
- Ranked Top 10 IATA Agent in SIN since 1978
- ISO 9002 Certified 1994
- Identified as Promising Local Enterprise (PLE) in 1995 Ranked #15 Best Forwarder in the 15th Asia Freight Industry Awards 2001
- Employing 650 staffs
- SGD120m Group Annual Revenue Turnover



# ASIA – Our Home Ground



Singapore



Malaysia



Indonesia



Thailand



Vietnam



Cambodia



Myanmar



Philippines

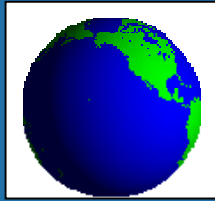


Greater China



# Asia – Our Home Ground

- Singapore
  - Global Airfreight International Pte Ltd
  - Global Container Freight Pte Ltd
- Malaysia
  - Penang, Kuala Lumpur, Port Kelang and Johor Bahru
- Indonesia
  - Jakarta, Bekasi, Bandung, Surabaya
- Thailand
  - Bangkok, Laos
- Vietnam
  - Hanoi, Ho Chi Minh City
- Cambodia
  - Phnom Penh
- Myanmar
  - Yangon
- The Philippines
  - Manila and Subic Bay (Rep)
- Greater China
  - Xiamen, Shanghai
  - Taipei, Kaohsiung and Taichung



# About Global Thailand

- Established since Year 2000
- Employing 70 staffs
- Currently 2 offices in Bangkok  
( Town office and airport office)





# V&M Statements

---

## Our Vision

- To be the “choice logistics solutions provider” in the region

## Our Mission

- Going for customer delight – by providing quality services to our customers in total logistics solution support services.





# Forming Strategic Alliance

---

## Our value-add offer:

- local knowledge + know-how
- Flexibility + speed in decision-making
- Competent + disciplined work-force
- Excellent relationships with major airlines and shipping line

# Additional Services

---

- Vendor Managed Inventory (VMI)
- Heavy lift and conventional project handling
- General Sales Agencies – Airlines & Shipping Lines
- Specialty Services
- 3<sup>rd</sup> Party Logistics



# Going for Customer Delight

---



**Peak Season  
Priority Allocation**



**Decisive Contingency  
Action Plan (SWAT)**



**Quarterly  
Scorecard**



**Staff Implant  
Capabilities**



**Dedicated 24/7  
Operation Team**



**Competent &  
Disciplined Workforce**



# Air Freight Services

- # Convenient pick up and delivery
- # Next Flight Out
- # Charters Flight
- # Handling of all export / import documentation
- # Oversized shipment



# Air Freight Services

- # Restricted materials / DGR cargo
- # Packing and crating
- # Break-bulk, on forwarding and distribution
- # Insurance Cover
- # Urgent Hand Carry Shipment
- # Custom Brokerage

# Airlines Support

- Malaysia Airlines
- Singapore Airlines
- Asiana Airlines
- Korean Airlines
- Thai Airways
- Emirates Airlines
- Korean Airlines
- China Southern
- American Airlines
- China Airlines
- Cathay Pacific Airways
- Air Asia
- Eva Air
- Hainan Airlines
- Cargolux
- Nippon Cargo Airlines
- Lufthansa German Airline
- Qantas
- Air China
- Austrian Airlines
- Delta airlines





# Ocean Freight Services

---

- # FCL contract management
- # Global NVOCC – FCL and LCL
- # Regular weekly sailings
- # Flexible transit time and options
- # Multi-modal transportation
- # On forwarding and distribution



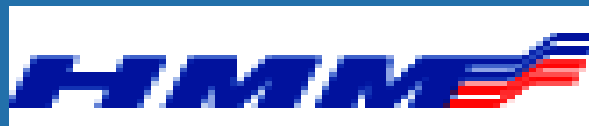
# Ocean Freight Services

---

- # Buyer's consolidation
- # Convenient warehouse
- # Insurance Cover Ocean Freight forwarding
- # Door-to-door pick-up & delivery
- # Warehousing & Distribution



# Shipping Line Support



# Warehouse and Distribution

---

- # Handle both General cargoes / Dangerous cargoes
- # Import-bonded
- # Export-Customers-Approved
- # Cold Products
- # Spacious loading / unloading areas
- # 24 – hr guard control in a safe and secure manner
- # Regular checks on the product
- # Rotate stock of the products correctly in accordance with FIFO



Site		Bisco-1	
Total Area	36,000 m <sup>2</sup>		
Warehouse	Bonded	General	
Cargo Storage Area	6,240 m <sup>2</sup>	9,703 m <sup>2</sup>	
Temperature Controlled Space	150 m <sup>2</sup>	565 m <sup>2</sup>	
Temperature Range	-10°C to + 25°C	-15°C to + 25°C	
Truck Bays	10 Bays	12 Bays	
Open Yard	-	-	
Licence	GBW*	-	
*General Bonded Warehouse			
Site		Bisco-2	
Total Area	32,000 m <sup>2</sup>		
Warehouse	Bonded	General	
Cargo Storage Area	3,037.5 m <sup>2</sup>	7,087.5 m <sup>2</sup>	
Temperature Controlled Space	-	-	
Temperature Range	-	-	
Truck Bays	3 Bays	8 Bays	
Open Yard	3,000 m <sup>2</sup>	7,000 m <sup>2</sup>	
Licence	GBW*	-	
*General Bonded Warehouse			



# Security Features - GPRS TRUCK

---

- Trucks

- GPRS : monitoring of truck movements
- Anti – Hijack Immobilisers thru H/P
- Double safety Door
- Web-based security at the office

# Security Trucks



GPRS-enabled

Additional  
Safety Door

Anti - Hijack  
Immobilisers

Notes : Our trucks are less than 2 years old on average  
Undergo regular maintenance

# Security Trucks

## Double safety Door



# Project Cargo (1)

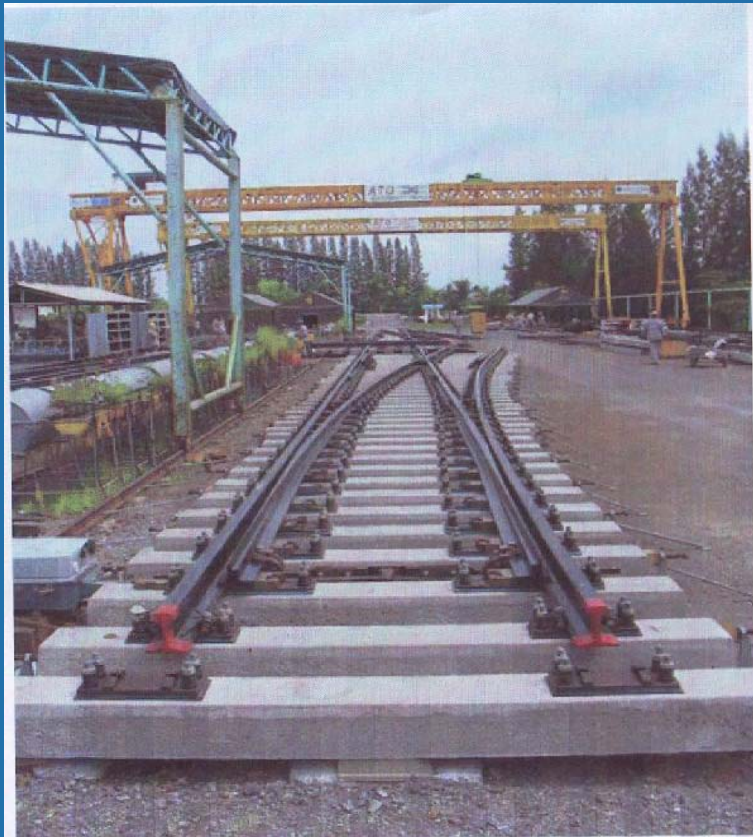
---

Port : Thailand to Taiwan

Mode of Transportation : Flat Rack Open Top



# Project Cargo (1)



# Project Cargo ( 1 )

Load cargo on Flat Rack



Tarpaulin



# Project Cargo (2)

---

- Destination : Muara, Brunei
- Commodity : Construction Materials + Combined Cycle Power Station
- Quantity : 129 Packages
- Gross Weight : 370,840.29 Kgs
- Volume : 1250.86 cbm
- Mode of Transportation : Sea shpt in one lot ( No split shpt allowed )

# Project Cargo (2)

---



# Project Cargo (2)

---



# Project Cargo (2)

---



# Project Cargo (3)

---

- Destination : Singapore to Satahip port
- Commodity : 460K H.Work Over Unit with Accessories
- Quantity : 81 PICS
- Gross Weight : 160,000 KGS.
- Volume : 407.72 M3
- Mode of Transportation : Sea Shipment in one lot

# Project Cargo (3)





# Project Cargo (3)

---



# End of presentation



## THANK YOU